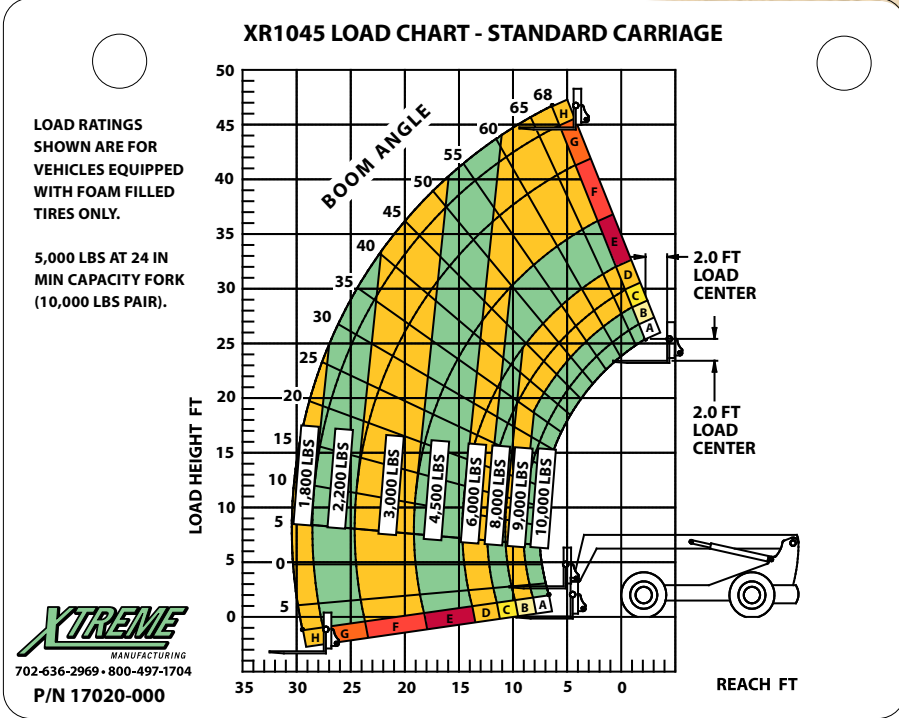


XTREME

MANUFACTURING

XR1045

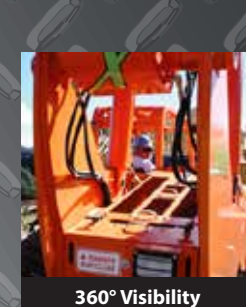
- Capacity 10,000 lbs
- Max Lift Height 45'
- Forward Reach 30' 4"
- Frame Leveling L/R 11°
- Weight 27,130 lbs
- Engine Perkins 111 hp
- Fuel Capacity 48 gal
- Tires Foam Filled
13.00 x 24 E3
- GPM 49
- PSI 3,500
- Hydraulic Oil Cap 58 gal
- Length to fork face 21' 9"
- Width 101"
- Height 8' 1"
- Wheel Base 120"
- Ground Clearance 16.5"
- Turning Radius 12'
- Warranty Xtreme 10-5-2



XTREME
MANUFACTURING
702-636-2969 • 800-497-1704
P/N 17020-000

- STANDARD FEATURES**
- The **XTREME** Difference
-
- 360° Visibility
 - Long Life Boom Rollers
 - Suspension Seat
 - Easy Service Access
 - Protected Tilt & Extend Cylinders
 - Steel Hydraulic & Fuel Tanks
 - Long Life Lexan Labels
 - Fiberglass Hoods
 - Heavy Duty Boom Chains
 - Suspended Pedals
 - Electrical Ring Terminals
 - Wider Outrigger Stance
 - Large Capacity Fuel Tanks
 - Trunnion Mounted Sway Cylinders
 - Melonite Pins
 - Rear Axle Stabilization (RAS)
 - Center Mounted Power Train
 - Standard Auxiliary Hydraulics
 - Solid Steel Plate Chassis
 - Steel Dash
 - Ductile Steel Manifold
 - Easy Cab Mounted Grab Handles
 - Reliable Perkins Engine
 - Master Disconnect Switch
 - Boom Lift Point
 - Axle Mounted Outriggers
 - Manual Lowering Valve (Cylinders)
 - Large Cross Section Boom
 - Easy Tie Downs
 - "Y" Frame Sway Handle
 - Heavy Duty Pre-Cleaner
 - Additional High Pressure Hyd Filter
 - Direct Engine/Trans Connection
 - Individual Gauges and Switches

- ATTACHMENTS & ACCESSORIES**
- Attachments**
- Standard Fixed Carriage (48", 60", 72", 96")
 - Fork Positioning Carriage (48", 72", 96")
 - Swing Carriage
 - Tilt Carriage
 - Personnel Platform
 - Sling Mount
 - Bucket (1.0 - 2.0 cu-yd)
 - Truss (2 ft, 3 ft, 12 ft, 15 ft)
 - Telescopic Truss (Slide on)
 - Pole Grapple Carriage
 - Grapple Bucket
 - Concrete Hopper
- Accessories / Options**
- Enclosed Cab w/Heat
 - Enclosed Cab w/Heat & A/C
 - Boom Work Light Package
 - Flashing Amber Strobe
 - Pintle Hook
 - Tail/Turn/Brake Lights
 - LED Lighting
 - Steel Fenders
 - 5th Wheel Attachment
 - Boom Maintenance Stand
 - Battery Blanket
 - Limited Slip Axle(s)
 - Locking Fuel Cap
 - Soft Cab
 - Additional Lift Points
 - Swivel Lifting Hook
 - Auxiliary Cab Heater
 - Dual Batteries
 - Clear Glass
 - Padded Arm Rest
 - Two Wheel Rear Steer



10-5-2 WARRANTY

10 YEARS OR 10,000 HOURS
FRAME & CHASSIS WELDMENT

5 YEARS OR 5,000 HOURS
BOOM WELDMENT & ROLLERS

2 YEARS OR 2,000 HOURS
ENGINE, ELECTRICAL, TRANSMISSION, DRIVE AXLES & HYDRAULIC COMPONENTS

www.XMFG.com

(702) 636-2969 (800) 497-1704
1415 W. BONANZA RD LAS VEGAS, NV 89106